
1.2

Managing Resources

Household Expenditure

Past Exam Questions and Answers

NOTE - Very Important

It is very important when answering exams question that you use the following steps -

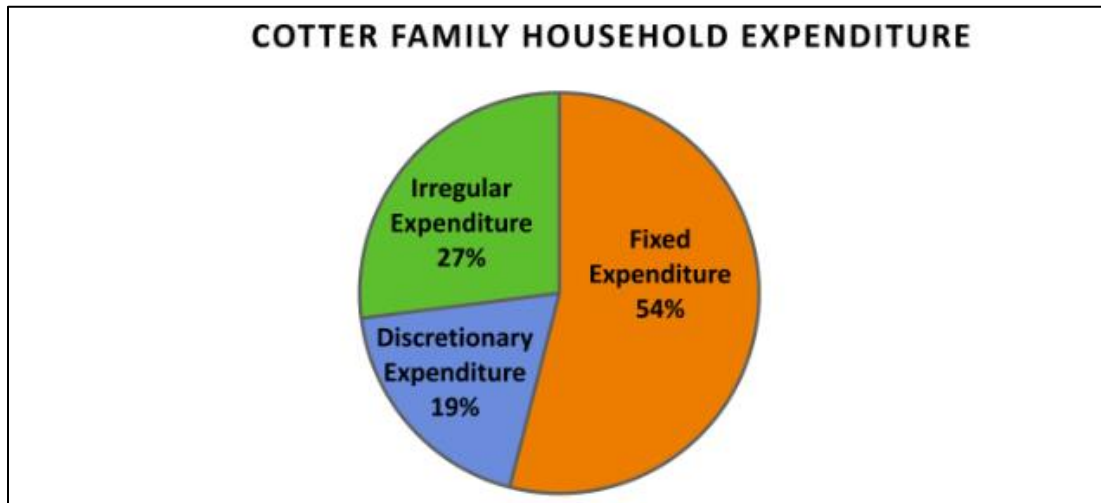
1. That you know the information for the learning outcome
2. That you understand the information from the learning outcome
3. That you can apply the information from the learning outcome to the question
4. Be able to give at least two full sentences for your answer (Fill up the space)

Questions are changing from rote learning to applying the knowledge to the Question

QUESTIONS

2022 - Question 1

The graph below shows the Cotter family household expenditure -



- (i) Which type of expenditure had the highest percentage of total expenditure in the cotter household?

- (ii) Give one example of each type of expenditure below -

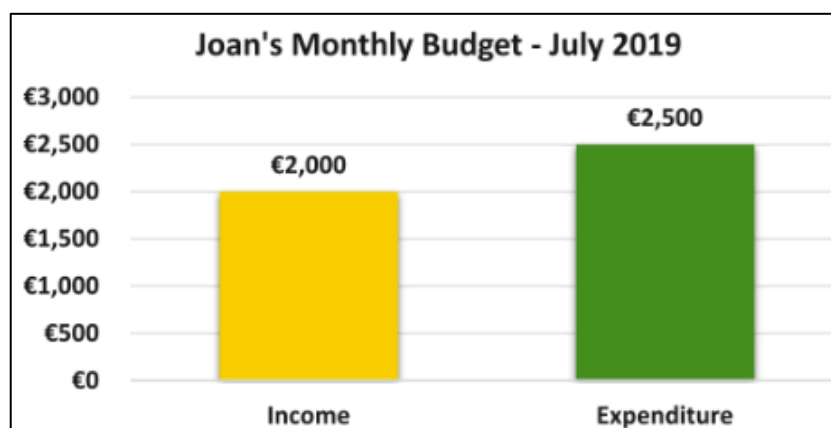
Fixed Expenditure:

Irregular Expenditure:

Discretionary Expenditure:

2019 - Question 1

The graph below shows Joan Murphy's monthly budget -

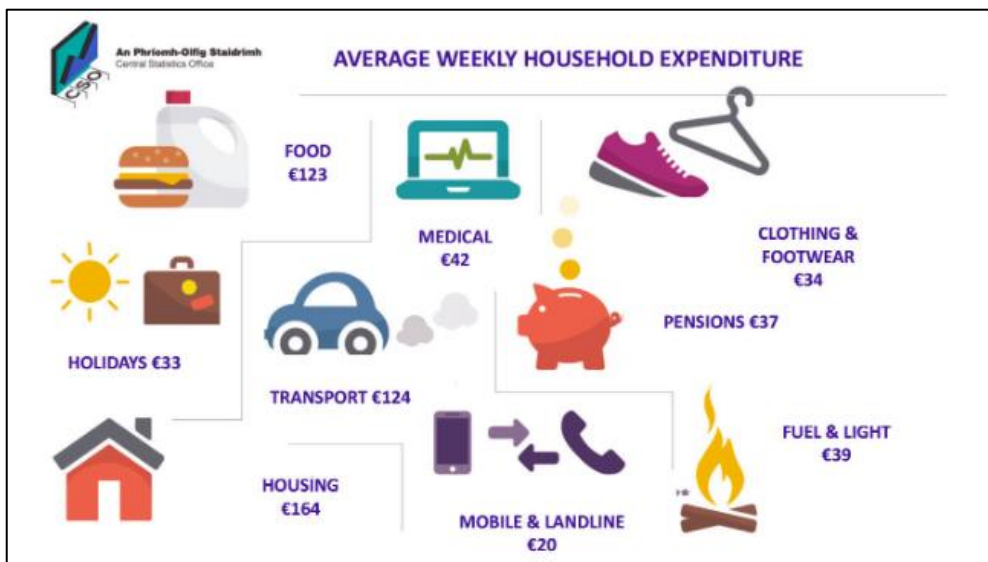


- (i) Calculate the difference between Joan's income and expenditure. State if it's a surplus or deficit.

--

- (ii) What advice would you give Joan based on your answer.

2019 - Sample Paper SEC - Question 1



Using the above graphic identify one example each of fixed, irregular and discretionary expenditure -

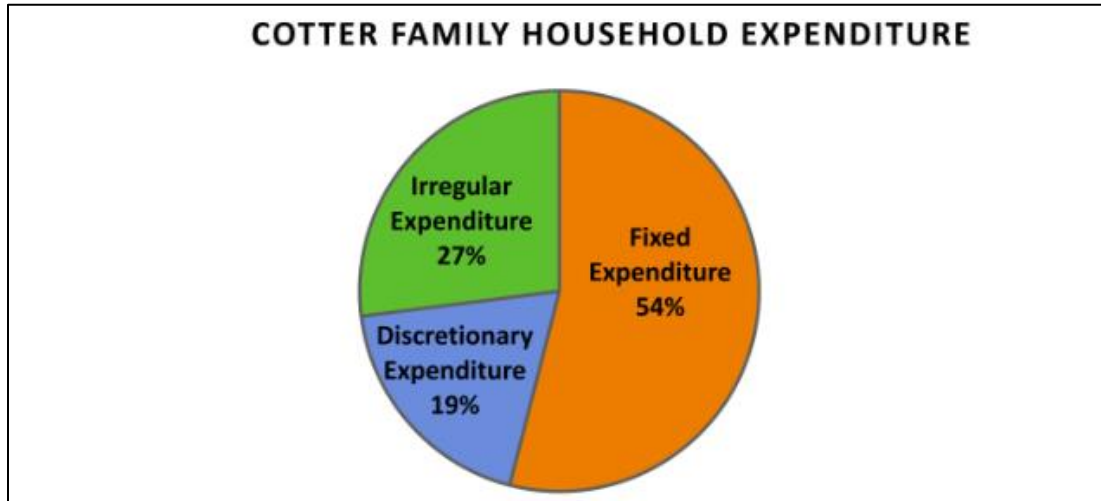
Write your answer below.

Fixed Expenditure	Irregular Expenditure	Discretionary Expenditure

SUGGESTED SOLUTION

2022 - Question 1

The graph below shows the Cotter family household expenditure -



- (i) Which type of expenditure had the highest percentage of total expenditure in the cotter household?

Fixed Expenditure

- (ii) Give one example of each type of expenditure below -

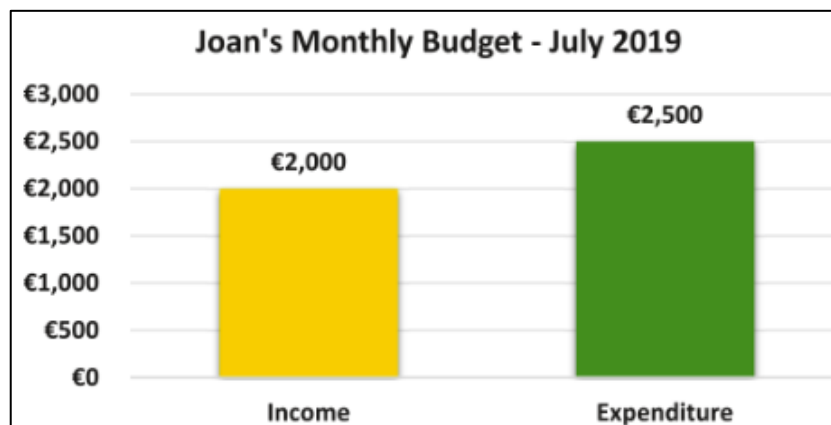
Fixed Expenditure: *Mortgage, Rent*

Irregular Expenditure: *Groceries, Light and Heat, Clothing*

Discretionary Expenditure: *Holiday*

2019 - Question 1

The graph below shows Joan Murphy's monthly budget -



- (i) Calculate the difference between Joan's income and expenditure. State if it's a surplus or deficit.

€2,000 - €2,500 = (€500). The difference is (€500) and it is a deficit

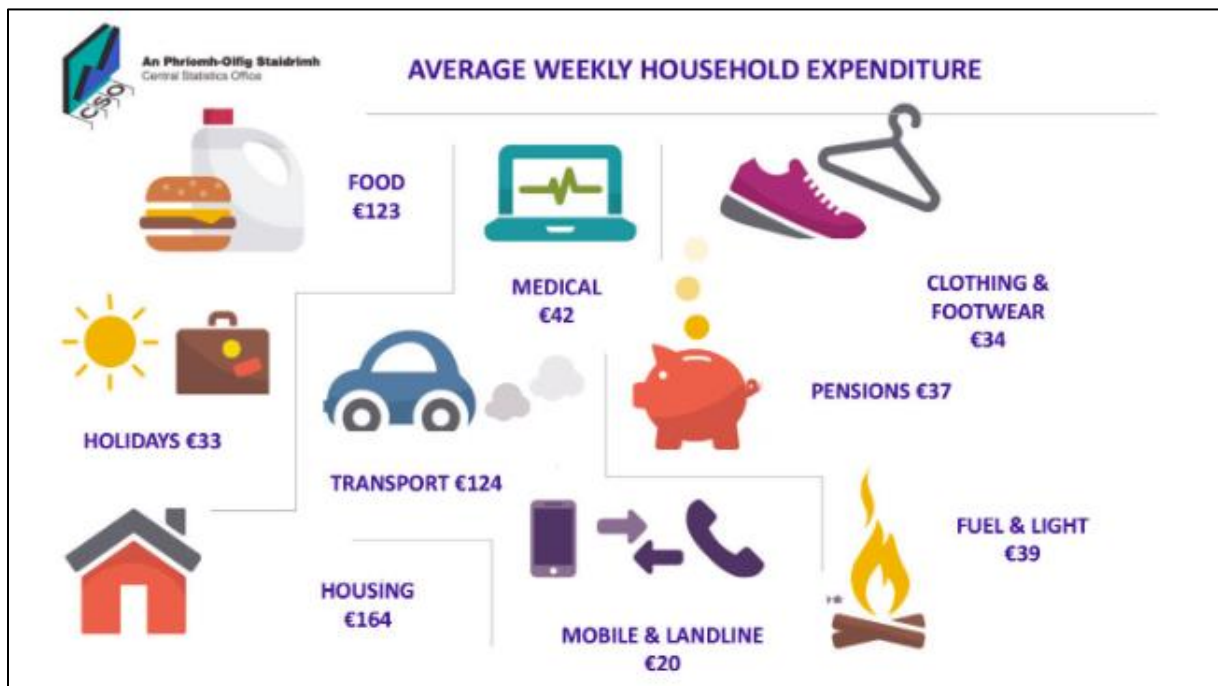
- (ii) What advice would you give Joan based on your answer.

Decrease expenditure - Joan could cut her discretionary expenditure for example holidays

Increase income - Joan could do some overtime to manage her income better

Shop around - Joan could shop around to get the best deal for example Switch .ie

2019 - Sample Paper SEC - Question 1



Using the above graphic identify one example each of fixed, irregular and discretionary expenditure - Write your answer below.

Fixed Expenditure	Irregular Expenditure	Discretionary Expenditure
Housing €164	Food €123	Holiday €33
Pension €37	Mobile and Landline €20	Clothing and footwear €34
Medical €42	Fuel and Lighting €39	